

FINISHES
STOFFE UND OBERFLÄCHEN
NUANCIER

FINISHES

COLLECTION

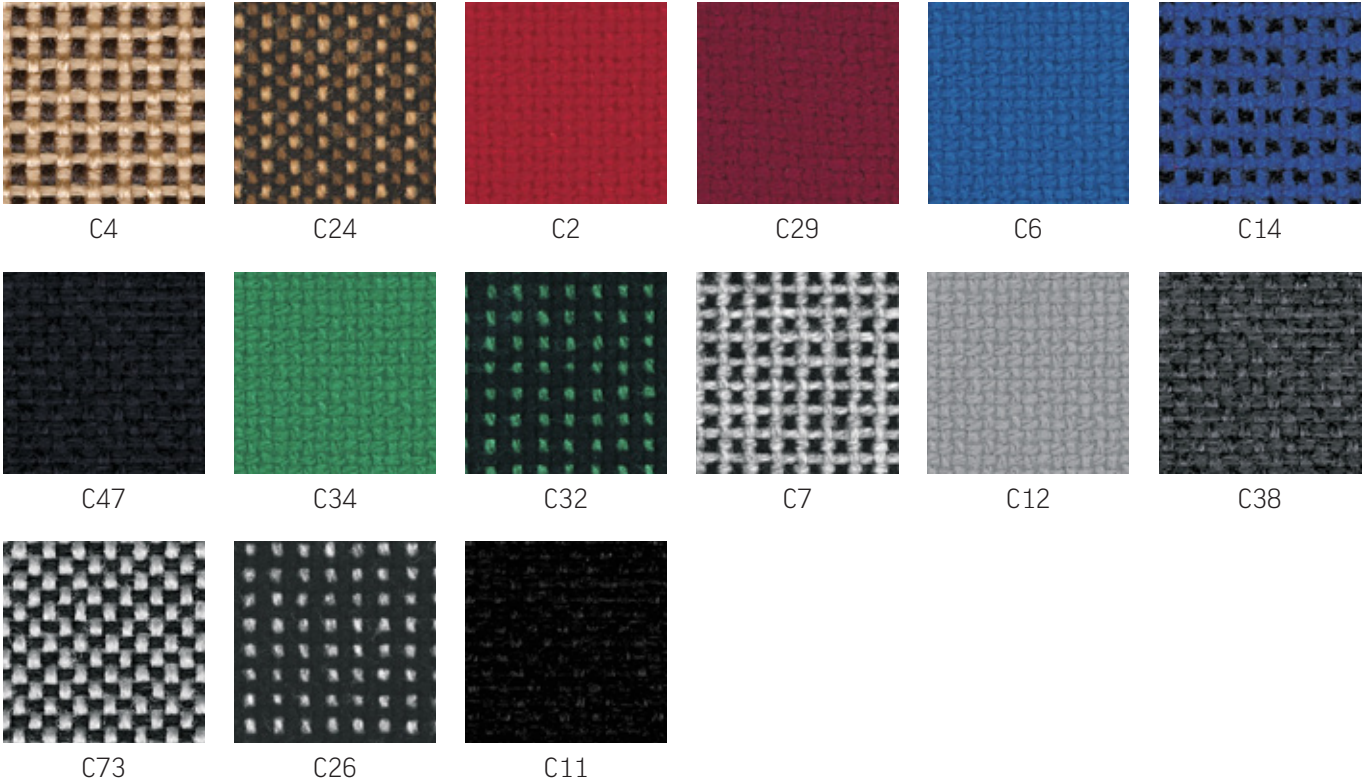
INDEX | INHALT | SOMMAIRE

3	BASIC FABRIC
4	LEATHER IMITATION
5	MICRO
6	BONDAI
7	KAIMAN
8	LUCIA
9	OBAN
10	SEMPRE
11	SENSE
12	CONTRACT
13	MICROFIBRA
14	NEXUS
15	VALENCIA
16	XTREME
17	TRENDY
18	FLEX
19	KING L ELAST
20	OXYGEN
21	RUNNER
22	SILVERTEX
23	SPLIT LEATHER SP FRONT
24	BLAZER
25	FAME
26	FINE LEATHER SD FRONT
27	FINE LEATHER LE FRONT
28	24/7
29	FINE LEATHER LE
30	FINE LEATHER SD
31	FINE LEATHER Q
32	ALCANTARA
33	FINE LEATHER DESIGNO
34	MESH OP
35	MESH
36	WOOD & PLYWOOD BEIZTÖNE SCHICHTHOLZ HÊTRE & MULTIPLIS
37	BEECH WOOD BUCHENSCHICHTHOLZ HÊTRE MASSIF
38	VENEERED PLYWOOD +4 FURNIER +4 MULTIPLIS VERNIS +4
39	VENEERED PLYWOOD +5 FURNIER +5 MULTIPLIS VERNIS +5
40	VENEERED PLYWOOD FURNIER MULTIPLIS VERNIS
41	LAMINATED TABLE TOPS TISCHPLATTE LAMINAT PLATEAUX EN STRATIFIÉ
42	LAMINATES LAMINATOBERFLÄCHEN STRATIFIÉS
43	MELAMINE MELAMIN MÉLAMINE
44	MELAMINE TOP 36 MELAMIN TOP 36 MÉLAMINE TOP 36
45	TOPALIT TABLE TOP TISCHPLATTE TOPALIT PLATEAUX EN TOPALIT
46	PLASTIC KUNSTSTOFF SYNTHÉTIQUE
49	METAL METALL MÉTAL
50	GLASS GLAS VERRE

Basic fabric* | C

PRICE GROUP | PREISGRUPPE | GROUPE DE PRIX

0



Price group 0 – only applicable to Nowy Styl brand products.
 | Preisgruppe 0 – nur für Produkte der Marke Nowy Styl erhältlich.
 | Groupe de prix 0 – applicable uniquement sur les produits de la marque Nowy Styl.

Composition:
 100% synthetic fibre
Weight:
 225 g/m²
Abrasion Resistance:
 35 000 Martindale cycles

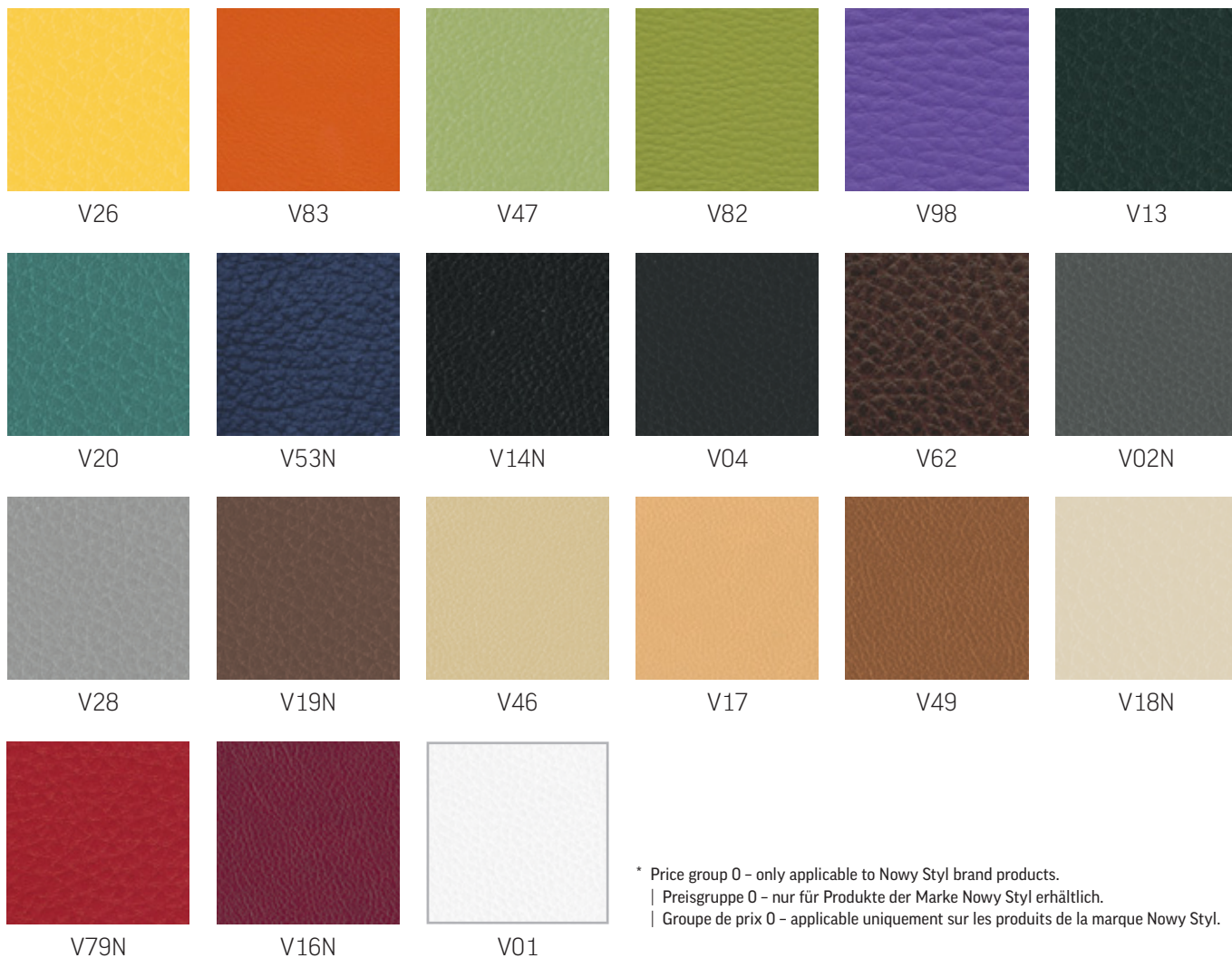
Material:
 100% Kunstfaser
Gewicht:
 225 g/m²
Scheuerfestigkeit:
 35 000 Touren Martindale

Composition :
 100% polyester
Poids :
 225 g/m²
Résistance à l'abrasion :
 35 000 Cycles Martindales

V | Leather imitation*

0

PRICE GROUP | PREISGRUPPE | GROUPE DE PRIX



* Price group 0 - only applicable to Nowy Styl brand products.
 | Preisgruppe 0 - nur für Produkte der Marke Nowy Styl erhältlich.
 | Groupe de prix 0 - applicable uniquement sur les produits de la marque Nowy Styl.

Composition:

100% polyester PVC coated

Weight:

460 g/m²

Abrasion Resistance:

30 000 Martindale cycles

Flammability:

the selected colours (marked as N) are fire resistant according to EN 1021 1&2 (cigarette & match), BS 5852: part 1: 1979

Other:

easy to keep clean

Material:

100% PVC-beschichtetes Polyestergewebe

Gewicht:

460 g/m²

Scheuerfestigkeit:

30 000 Touren Martindale

Brandschutznormen:

Endung „N“: EN 1021 1&2 (Zigaretten & Streichholz), BS 5852: part 1: 1979

Sonstiges:

einfach zu reinigen

Composition :

100% polyester enduit PVC

Poids :

460 g/m²

Résistance à l'abrasion :

30 000 Cycles Martindales

Résistance au feu :

coloris marqués N sont non-inflammables : EN 1021 1&2 (cigarette et allumette), BS 5852 : Part 1 : 1979

Autres :

facile à nettoyer

Attention! Colour patterns illustrated here may differ from the originals. Nowy Styl Group reserves the rights to change the constructional features and finishes of products. Information about finishes applicable to each product can be found in Nowy Styl Group pricelists. | Die tatsächlichen Farben können von den, im Katalog abgebildeten Farben abweichen. Weitere Informationen zu den Oberflächen /Stoffen finden Sie in den Preislisten. Nowy Styl Group behält sich das Recht vor, Designänderungen und Änderungen in den Stoffen und Oberflächen vorzunehmen. | Pour plus d'informations sur les finitions disponibles pour chaque produit, se reporter aux Tarifs Publics. Nowy Styl Group se réserve le droit de modifier les finitions de ses produits.

Micro* | M

PRICE GROUP | PREISGRUPPE | GROUPE DE PRIX

0



* Price group 0 – only applicable to Nowy Styl brand products.
 | Preisgruppe 0 – nur für Produkte der Marke Nowy Styl erhältlich.
 | Groupe de prix 0 – applicable uniquement sur les produits de la marque Nowy Styl.

Composition:

100% polyester

Weight:215 g/m²**Abrasion Resistance:**

50 000 Martindale cycles

Flammability:

EN 1021 1&2 (cigarette & match)

Other:

non-toxic upholstery: Pn-88/B-02855, hygienic certificate by National Hygiene Institute in Poland

Material:

100% Polyester

Gewicht:215 g/m²**Scheuerfestigkeit:**

50 000 Touren Martindale

Brandschutznormen:

EN 1021 1&2 (Zigaretten & Streichholz)

Sonstiges:

nicht-toxischer Stoff: Pn-88/B-02855, Hygiene-Zertifikat des Nationalen Hygieneinstituts in Polen

Composition :

100% polyester

Poids :215 g/m²**Résistance à l'abrasion :**

50 000 Cycles Martindales

Résistance au feu :

EN 1021 1&2 (cigarette et allumette)

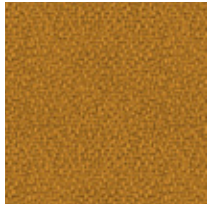
Autres:

Tissu non toxique : Pn-88/B-02855, Attestation Hygiénique de l'institut National d'Hygiène en Pologne

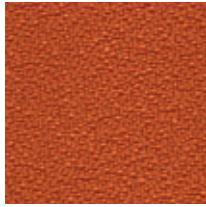
BN | Bondai

1

PRICE GROUP | PREISGRUPPE | GROUPE DE PRIX



BN3005



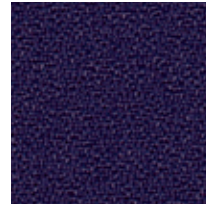
BN3012



BN4011



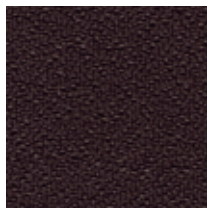
BN7048



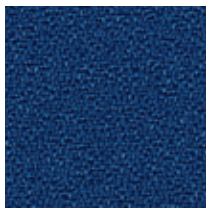
BN5004



BN1005



BN2036



BN6016



BN1008



BN8078



BN8010



BN8033

Composition:

100% polyester

Weight:

250 g/m²

Abrasion Resistance:

150 000 Martindale cycles

Flammability:

EN 1021 1&2 (cigarette & match), BS 7176 medium hazard, BS 5852 section 4 crib 5

Material:

100% Polyester

Gewicht:

250 g/m²

Scheuerfestigkeit:

150 000 Touren Martindale

Brandschutznormen:

EN 1021 1&2 (Zigaretten & Streichholz), BS 7176 medium hazard, BS 5852 section 4 crib 5

Composition :

100% polyester

Poids :

250 g/m²

Résistance à l'abrasion :

150 000 Cycles Martindales

Résistance au feu :

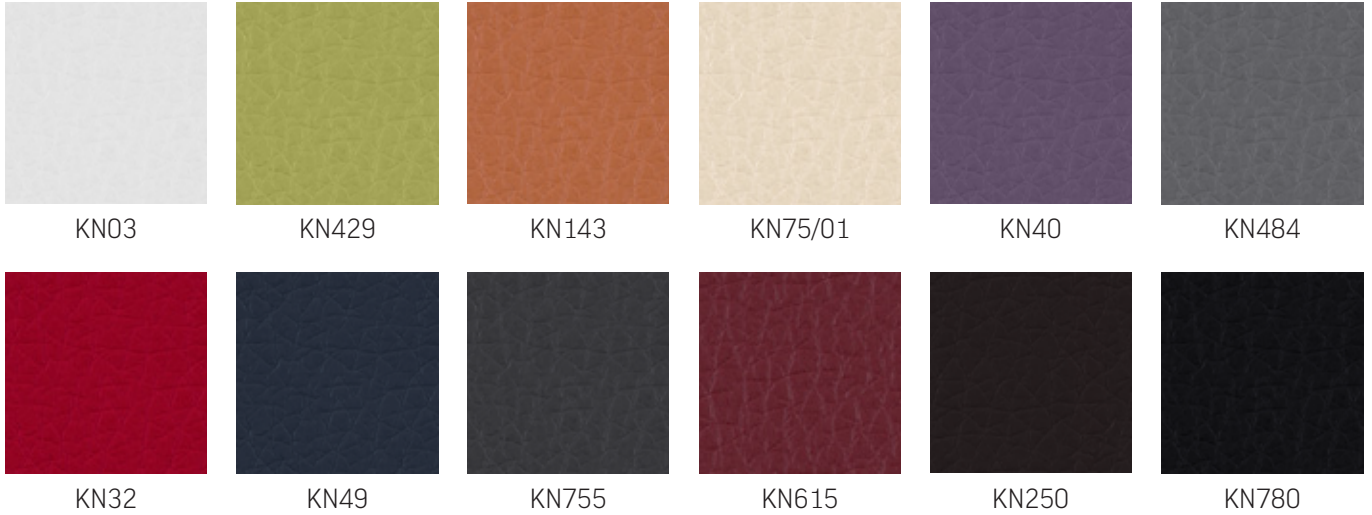
EN 1021 1&2 (cigarette et allumette), BS 7176 risque moyen, BS 5852 section 4 crib 5

Attention! Colour patterns illustrated here may differ from the originals. Nowy Styl Group reserves the rights to change the constructional features and finishes of products. Information about finishes applicable to each product can be found in Nowy Styl Group pricelists. | Die tatsächlichen Farben können von den, im Katalog abgebildeten Farben abweichen. Weitere Informationen zu den Oberflächen /Stoffen finden Sie in den Preislisten. Nowy Styl Group behält sich das Recht vor, Designänderungen und Änderungen in den Stoffen und Oberflächen vorzunehmen. | Pour plus d'informations sur les finitions disponibles pour chaque produit, se reporter aux Tarifs Publics. Nowy Styl Group se réserve le droit de modifier les finitions de ses produits.

Kaiman | KN

PRICE GROUP | PREISGRUPPE | GROUPE DE PRIX

1

**Composition:**

upper layer: 100% polyurethane, bottom layer:
70% polyester, 30% cotton

Weight:

435 g/m²

Abrasion Resistance:

100 000 Martindale cycles

Flammability:

BS 5885 source 0

Other:

Hydrolysis (DIN EN ISO 32100 (DIN 53351) / DIN
53359) - 15 000 revs

Material:

Deckmaterial: 100% Polyurethan, Trägermaterial:
70% Polyester, 30% Baumwolle

Gewicht:

435 g/m²

Scheuerfestigkeit:

100 000 Touren Martindale

Brandschutznormen:

BS 5885 source 0

Sonstiges:

Hydrolyse (DIN EN ISO 32100 (DIN 53351) / DIN
53359) - 15 000 Touren

Composition :

couche supérieure: 100% polyuréthane,
couche inférieure: 70% polyester, 30% coton

Poids :

435 g/m²

Résistance à l'abrasion :

100 000 Cycles Martindales

Résistance au feu :

BS 5885 source 0

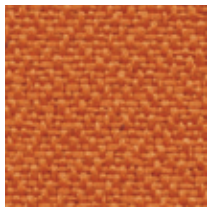
Autres :

Hydrolyse (DIN EN ISO 32100 (DIN 53351) / DIN
53359) - 15 000 cycles

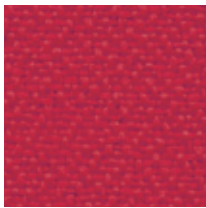
YB | Lucia

1

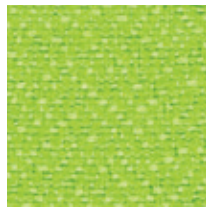
PRICE GROUP | PREISGRUPPE | GROUPE DE PRIX



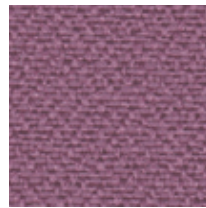
YB130



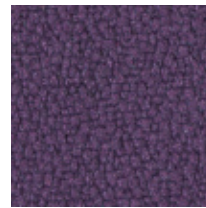
YB105



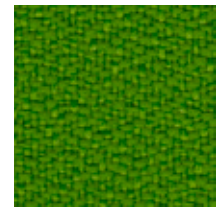
YB156



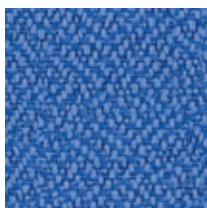
YB102



YB090



YB200



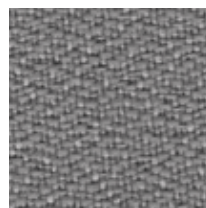
YB097



YB026



YB093



YB094



YB046



YB009

Composition:

100% polyester

Weight:

260 g/m²

Abrasion Resistance:

50 000 Martindale cycles

Flammability:

EN1021 1&2 (cigarette & match), BS 7176 low hazard, BS 476 Class 1

Other:

Recycled EU Flower Certified

Material:

100% Polyester

Gewicht:

260 g/m²

Scheuerfestigkeit:

50 000 Touren Martindale

Brandschutznormen:

EN 1021 1&2 (Zigaretten & Streichholz), BS 7176 low hazard, BS 476 Class 1

Sonstiges:

"Recycled EU Flower" Zertifikat

Composition :

100% polyester

Poids :

260 g/m²

Résistance à l'abrasion :

50 000 Cycles Martindales

Résistance au feu :

EN 1021 1&2 (cigarette et allumette), BS 7176 risque faible, BS 476 Classe 1

Autres :

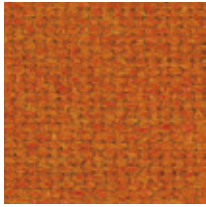
Certification « Recycled EU Flower »

Attention! Colour patterns illustrated here may differ from the originals. Nowy Styl Group reserves the rights to change the constructional features and finishes of products. Information about finishes applicable to each product can be found in Nowy Styl Group pricelists. | Die tatsächlichen Farben können von den im Katalog abgebildeten Farben abweichen. Weitere Informationen zu den Oberflächen /Stoffen finden Sie in den Preislisten. Nowy Styl Group behält sich das Recht vor, Designänderungen und Änderungen in den Stoffen und Oberflächen vorzunehmen. | Pour plus d'informations sur les finitions disponibles pour chaque produit, se reporter aux Tarifs Publics. Nowy Styl Group se réserve le droit de modifier les finitions de ses produits.

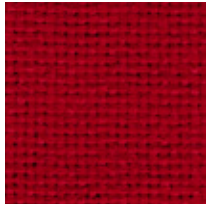
Oban* | EF

PRICE GROUP | PREISGRUPPE | GROUPE DE PRIX

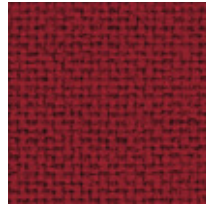
1



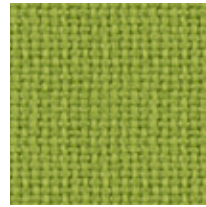
EF808



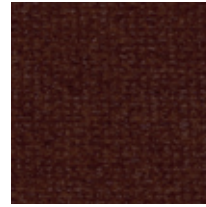
EF076



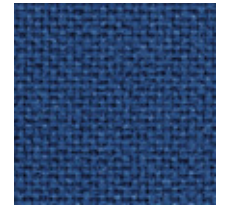
EF037



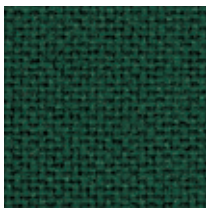
EF046



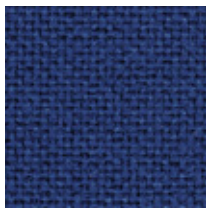
EF810



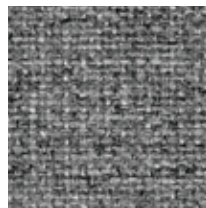
EF078



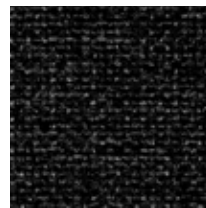
EF069



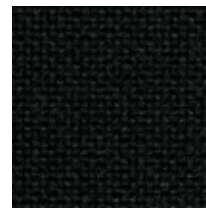
EF010



EF031



EF002



EF019

* Oban - only applicable to Nowy Styl brand products.
 | Oban - nur für Produkte der Marke Nowy Styl erhältlich.
 | Oban - applicable uniquement sur les produits de la marque Nowy Styl.

Composition:

100% polypropylene

Weight:230 g/m²**Abrasion Resistance:**

grade A tested in accordance with EN 14465:2003

Flammability:

EN 1021-1 (cigarette)

Other:

hygienic certificate by national Hygiene Institute in Poland

Material:

100% Polypropylene

Gewicht:230 g/m²**Scheuerfestigkeit:**

Güteklasse A geprüft nach EN 14465:2003

Brandschutznormen:

EN 1021-1 (Zigaretten)

Sonstiges:

Hygiene-Zertifikat des Nationalen Hygieneinstituts in Polen

Composition :

100% polypropylène

Poids :230 g/m²**Résistance à l'abrasion :**

grade A testé selon la norme EN 14465:2003

Résistance au feu :

EN 1021 1 (cigarette)

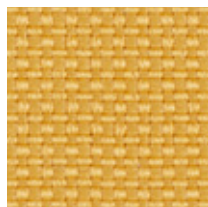
Autres :

Attestation Hygiénique de l'institut National d'Hygiène en Pologne

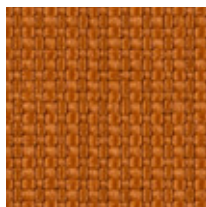
SM | Sempre

1

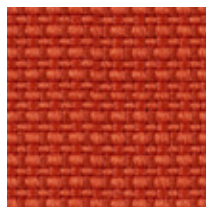
PRICE GROUP | PREISGRUPPE | GROUPE DE PRIX



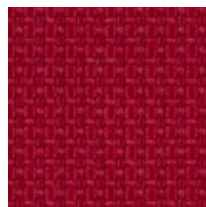
SM11



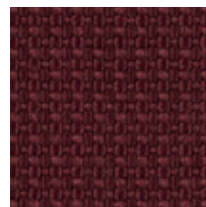
SM10



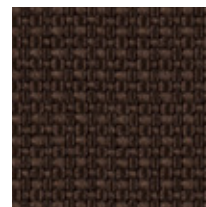
SM09



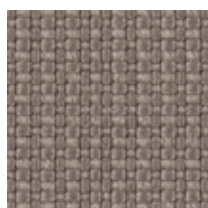
SM12



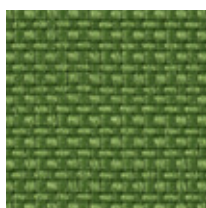
SM06



SM05



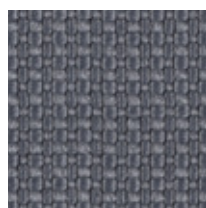
SM04



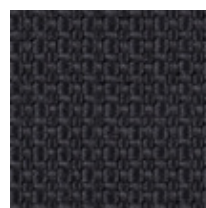
SM08



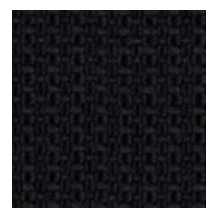
SM07



SM03



SM02



SM01

Composition:

100% polyester

Weight:

366 g/m²

Abrasion Resistance:

160 000 Martindale cycles

Flammability:

EN 1021 1&2 (cigarette & match)

Other:

hygienic certificate by National Hygiene Institute in Poland

Material:

100% Polyester

Gewicht:

366 g/m²

Scheuerfestigkeit:

160 000 Touren Martindale

Brandschutznormen:

EN 1021 1&2 (Zigaretten & Streichholz)

Sonstiges:

Hygiene-Zertifikat des Nationalen Hygieneinstituts in Polen

Composition :

100% polyester

Poids :

366 g/m²

Résistance à l'abrasion :

160 000 Cycles Martindales

Résistance au feu :

EN 1021 1&2 (cigarette et allumette)

Autres :

Attestation Hygiénique de l'Institut National d'Hygiène en Pologne"

Sense* | SE

PRICE GROUP | PREISGRUPPE | GROUPE DE PRIX

1



SE02



SE09

* Sense - only applicable to wooden chairs (Nowy Styl brand).
 | Sense - nur für Holzstühle (der Nowy Styl Marke) verfügbar.
 | Sense - pour sièges en hêtre massif uniquement (marque Nowy Styl).

Composition:

100% polyester

Weight:300 g/m²**Abrasion Resistance:**

25 000 Martindale cycles

Other:

protective layer against dirt, stains and water

Material:

100% Polyester

Gewicht:300 g/m²**Scheuerfestigkeit:**

25 000 Touren Martindale

Sonstiges:Schutzschicht schmutzabweisend
und wasserabweisend**Composition :**

100% polyester

Poids :300 g/m²**Résistance à l'abrasion :**

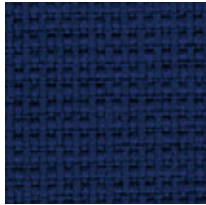
25 000 Cycles Martindales

Autres :couche supérieure de protection contre
l'eau et la saleté

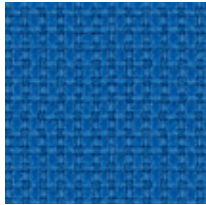
YN | Contract

2

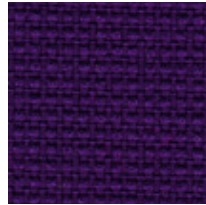
PRICE GROUP | PREISGRUPPE | GROUPE DE PRIX



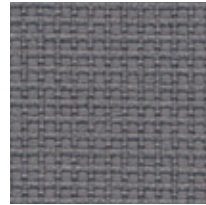
YN210



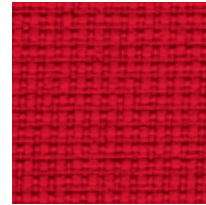
YN202



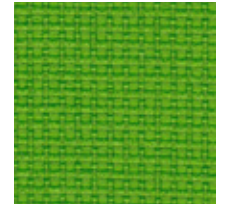
YN204



YN206



YN079



YN200



YN009

Composition:

100% polyester

Weight:

320 g/m²

Abrasion Resistance:

100 000 Martindale cycles

Flammability:

EN 1021 1&2 (cigarette & match), BS 7176 low hazard, BS 7176 medium hazard crib 5, NF-P-503 M1, DIN 4102 B1, UNI 8456 & UNI 9174 Class 1

Other:

Recycled EU Flower Certified

Material:

100% Polyester

Gewicht:

320 g/m²

Scheuerfestigkeit:

100 000 Touren Martindale

Brandschutznormen:

EN 1021 1&2 (Zigaretten & Streichholz), BS 7176 low hazard, BS 7176 medium hazard crib 5, NF-P-503 M1, DIN 4102 B1, UNI 8456 & UNI 9174 Class 1

Sonstiges:

Recycled EU Flower Certified

Composition :

100% polyester

Poids :

320 g/m²

Résistance à l'abrasion :

100 000 Cycles Martindales

Résistance au feu :

EN 1021 1&2 (cigarette et allumette), BS 7176 risque faible, BS 7176 risque moyen crib 5, NF-P-503 M1, DIN 4102 B1, UNI 8456 & UNI 9174 Classe 1

Autres :

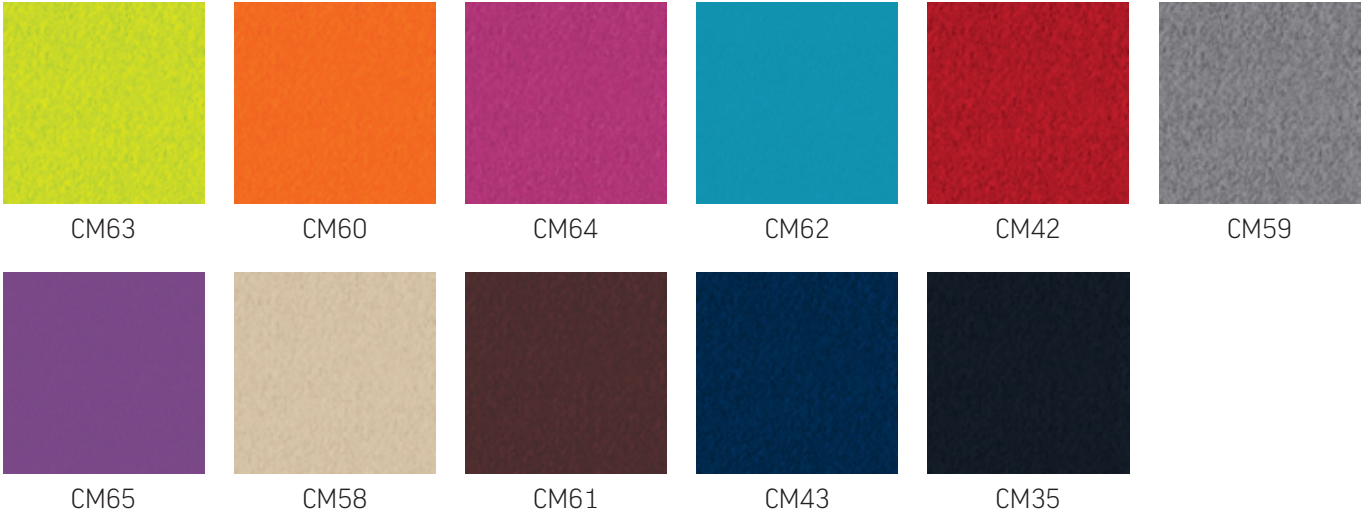
Certification « Recycled EU Flower »

Attention! Colour patterns illustrated here may differ from the originals. Nowy Styl Group reserves the rights to change the constructional features and finishes of products. Information about finishes applicable to each product can be found in Nowy Styl Group pricelists. | Die tatsächlichen Farben können von den, im Katalog abgebildeten Farben abweichen. Weitere Informationen zu den Oberflächen /Stoffen finden Sie in den Preislisten. Nowy Styl Group behält sich das Recht vor, Designänderungen und Änderungen in den Stoffen und Oberflächen vorzunehmen. | Pour plus d'informations sur les finitions disponibles pour chaque produit, se reporter aux Tarifs Publics. Nowy Styl Group se réserve le droit de modifier les finitions de ses produits.

Microfibra | CM

PRICE GROUP | PREISGRUPPE | GROUPE DE PRIX

2

**Composition:**

upper layer: 85% polyester, 15% nylon, bottom layer:
35% cotton, 65% polyester

Weight:

440 g/m²

Abrasion Resistance:

100 000 Martindale cycles

Flammability:

EN 1021 1&2 (cigarette & match)

Other:

Öko-Tex Standard 100, Teflon - protective layer against
dirt, stains and water

Material:

Deckmaterial: 85% Polyester, 15% nylon,
Trägergewebe: 35% Baumwolle, 65% Polyester

Gewicht:

440 g/m²

Scheuerfestigkeit:

100 000 Touren Martindale

Brandschutznormen:

EN 1021 1&2 (Zigaretten & Streichholz)

Sonstiges:

Öko-Tex Standard 100, Teflon - Schutzschicht
schmutzabweisend und wasserabweisend

Composition :

Couche supérieure : 85% polyester, 15% nylon,
Couche inférieure : 35% coton, 65% polyester

Poids :

440 g/m²

Résistance à l'abrasion :

100 000 Cycles Martindales

Résistance au feu :

EN 1021 1&2 (cigarette et allumette)

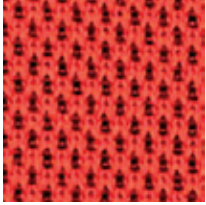
Autres :

Öko-Tex Standard 100, Téflon - film de protection
contre l'eau et la saleté

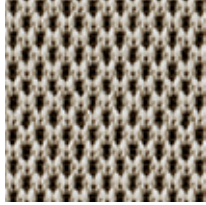
UNY | Nexus

2

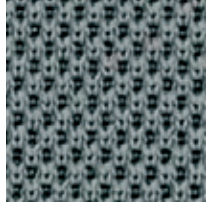
PRICE GROUP | PREISGRUPPE | GROUPE DE PRIX



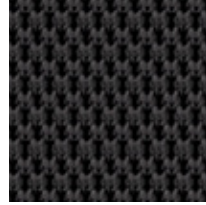
UNY04



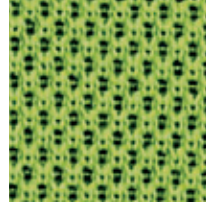
UNY02



UNY01



UNY11



UNY05

Composition:

100% polyester

Weight:

300 g/m²

Abrasion Resistance:

100 000 Martindale cycles

Flammability:

EN 1021 1&2 (cigarette & match), BS 7176 low hazard; BS 476 Part 7 Class 1

Material:

100% Polyester

Gewicht:

300 g/m²

Scheuerfestigkeit:

100 000 Touren Martindale

Brandschutznormen:

EN 1021 1&2 (Zigaretten & Streichholz), BS 7176 low hazard; BS 476 Part 7 Class 1

Composition :

100% polyester

Poids :

300 g/m²

Résistance à l'abrasion :

100 000 Cycles Martindales

Résistance au feu :

EN 1021 1&2 (cigarette et allumette), BS 7176 risque faible, BS 476 Part 7 Classe 1

Valencia | VL

PRICE GROUP | PREISGRUPPE | GROUPE DE PRIX

2



VL6012



VL6019



VL2074



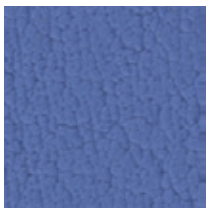
VL1048



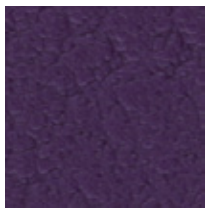
VL0034



VL0020



VL3001



VL7001



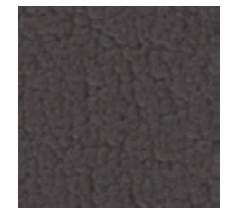
VL3067



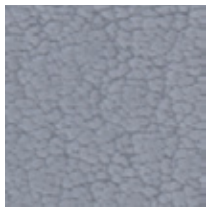
VL5041



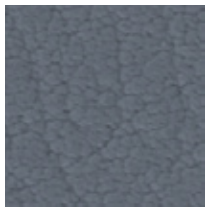
VL5001



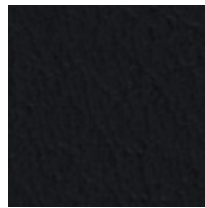
VL4041



VL4045



VL4043



VL9035

Composition: upper layer:

upper layer: 100% vinyl,
bottom layer: 100% polyester Hi-Loft

Weight:

650 g/m²

Abrasion Resistance:

300 000 Martindale cycles

Flammability:

EN 1021 1&2 (cigarette & match), DIN 4102 B2, NF P 92-503/M2, ÖNORM B 3825 Gruppe 1; ÖNORM A 3800 Teil 1 Klasse Q1

Other:

EN 71-3 safety of toys (migration of certain elements), PERMABLOK3® - superior antibacterial, antistain and antifungal protection

Material:

Deckmaterial: 100% Vinyl,
Trägergewebe: 100% Polyester Hi-Loft

Gewicht:

650 g/m²

Scheuerfestigkeit:

300 000 Touren Martindale

Brandschutznormen:

EN 1021 1&2 (Zigaretten & Streichholz), DIN 4102 B2, NF P 92-503/M2, ÖNORM B 3825 Gruppe 1; ÖNORM A 3800 Teil 1 Klasse Q1

Sonstiges:

EN 71 - 3 Sicherheit von Spielzeugen (Ausdünstung), PERMABLOK3® - antimikrobiell ausgerüstet, chemikalienbeständig und schmutzabweisend

Composition :

couche supérieure : 100% vinyle,
couche inférieure : 100% polyester Hi-Loft

Poids :

650 g/m²

Résistance à l'abrasion :

300 000 Cycles Martindales

Résistance au feu :

EN 1021 1&2 (cigarette et allumette), DIN 4102 B2, NF P 92-503/M2, ÖNORM B 3825 Gruppe 1; ÖNORM A 3800 Teil 1 Klasse Q1

Autres :

EN 71-3 sécurité des jouets (migration spécifique de certains éléments) PERMABLOK3® - traitement de protection, antibactérien, antitaches et antifongique

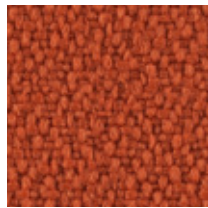
XR | Xtreme

2

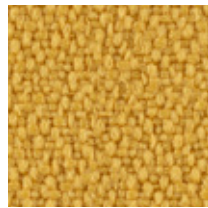
PRICE GROUP | PREISGRUPPE | GROUPE DE PRIX



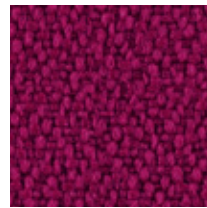
XR079



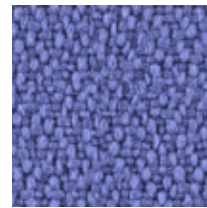
XR076



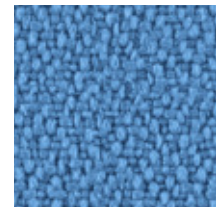
XR072



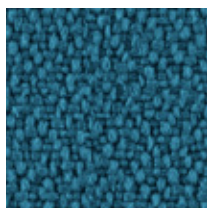
XR101



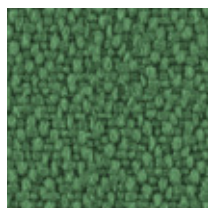
XR069



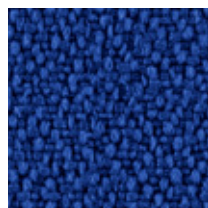
XR073



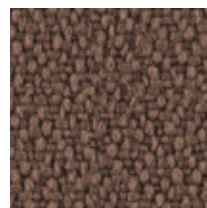
XR160



XR159



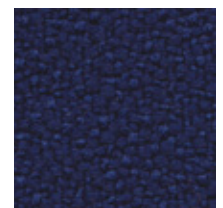
XR005



XR091



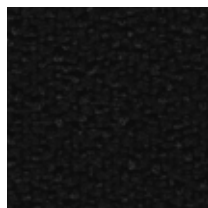
XR108



XR026



XR081



XR009

Composition:

100% polyester FR

Weight:

310 g/m²

Abrasion Resistance:

100 000 Martindale cycles

Flammability:

EN 1021 1&2 (cigarette & match), BS 7176 medium hazard crib 5, DIN 4102 B1, NF-P-92-507 M1, BS 7176 low hazard, UNI 8456 & UNI 9174 Class 1

Material:

100% Polyester FR

Gewicht:

310 g/m²

Scheuerfestigkeit:

100 000 Touren Martindale

Brandschutznormen:

EN 1021 1&2 (Zigaretten & Streichholz), Bs 7176 medium hazard crib 5, DIN 4102 B1, NF-P-92-507 M1, BS 7176 low hazard, UNI 8456 & UNI 9174 Class 1

Composition :

100% polyester FR

Poids :

310 g/m²

Résistance à l'abrasion :

100 000 Cycles Martindales

Résistance au feu :

EN 1021 1&2 (cigarette et allumette), BS 7176 risque moyen, BS 7176 risque moyen, crib 5, DIN 4102 B1, NF-P-92-507 M1, BS 7176 risque faible, UNI 8456 & UNI 9174 Classe 1

Trendy* | TE

PRICE GROUP | PREISGRUPPE | GROUPE DE PRIX

3



TE01



TE02

- * Trendy - only applicable to wooden chairs (Nowy Styl brand).
 | Trendy - nur für Holzstühle (der Nowy Styl Marke) verfügbar.
 | Trendy - pour sièges en hêtre massif uniquement (marque Nowy Styl).

Composition:

39% polyester , 26% cotton, 35% viscose

Weight:495 g/m²**Abrasion Resistance:**

18 000 Martindale cycles

Other:

Teflon* - protective layer against dirt, stains and water

Material:

39% Polyester , 26% Baumwolle, 35% Viskose

Gewicht:495 g/m²**Scheuerfestigkeit:**

18 000 Touren Martindale

Sonstige:

Teflon* - Schutzschicht schmutzabweisend und wasserabweisend

Composition :

39% polyester , 26% coton, 35% viscose

Poids :495 g/m²**Résistance à l'abrasion :**

18 000 Cycles Martindales

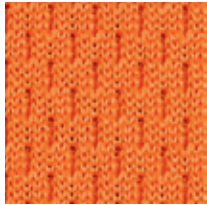
Autres :

Téflon - film de protection contre l'eau et la saleté

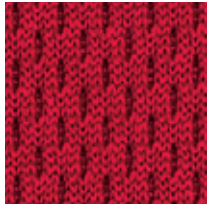
XF | Flex

3

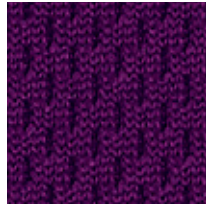
PRICE GROUP | PREISGRUPPE | GROUPE DE PRIX



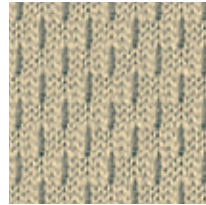
XF63035



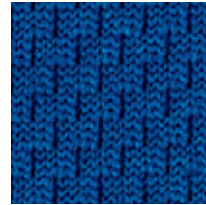
XF64089



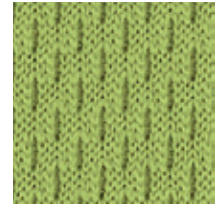
XF65037



XF61078



XF66062



XF68056



XF66065



XF60011



XF60025



XF60999

Composition:

100% polyester

Weight:

450 g/m²

Abrasion Resistance:

80 000 Martindale cycles

Flammability:

EN 1021 1&2 (cigarette & match), Calif. Bull. 117E, ÖNORM B 3825 B1; ÖNORM A 3800 P1/Q1

Material:

100% Polyester

Gewicht:

450 g/m²

Scheuerfestigkeit:

80 000 Touren Martindale

Brandschutznormen:

EN 1021 1&2 (Zigaretten & Streichholz), Calif. Bull. 117E, ÖNORM B 3825 B1; ÖNORM A 3800 P1/Q1

Composition :

100% polyester

Poids :

450 g/m²

Résistance à l'abrasion :

80 000 Cycles Martindales

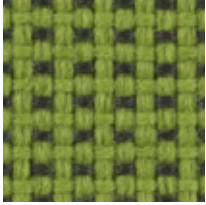
Résistance au feu :

EN 1021 1&2 (cigarette et allumette), Calif. Bull. 117E, ÖNORM B 3825 B1; Önorm A 3800 P1/Q1

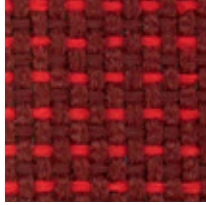
King L Elast | K

PRICE GROUP | PREISGRUPPE | GROUPE DE PRIX

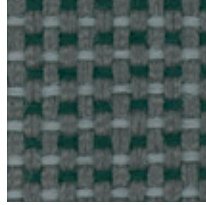
3



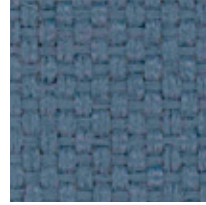
K9704



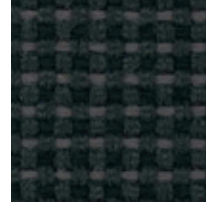
K4517



K8507



K6016



K8510

Composition:

100% polyester Trevira CS

Weight:260 g/m²**Abrasion Resistance:**

70 000 Martindale cycles

Flammability:

EN 1021-1 cigarette, EN 1021-2 match, BS 7176 medium hazard, BS 5852 part II crib 5, M1 (NF P 92501-7), B1 (DIN 4102)

Material:

100% Polyester Trevira CS

Gewicht:260 g/m²**Scheuerfestigkeit:**

70 000 Touren Martindale

Brandschutznormen:

EN 1021-1 (Zigaretten), EN 1021-2 (Streichholz), BS 7176 medium hazard, BS 5852 part II crib 5, M1 (NF P 92501-7), B1 (DIN 4102)

Composition :

100% polyester Trevira CS

Poids :260 g/m²**Résistance à l'abrasion :**

70 000 Cycles Martindales

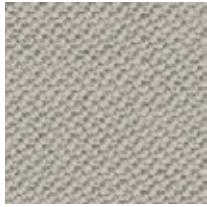
Résistance au feu :

EN 1021-1 (cigarette), EN 1021-2 (allumette), BS 7176 risque moyen, BS 5852 part II crib 5, M1 (NF P 92501-7), B1 (DIN 4102)

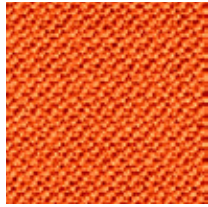
OX | Oxygen

3

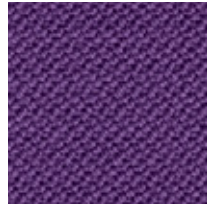
PRICE GROUP | PREISGRUPPE | GROUPE DE PRIX



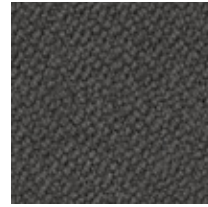
OX039



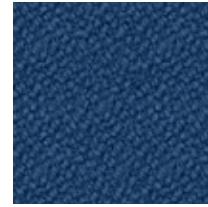
OX035



OX023



OX010



OX007



OX001

Composition:

90% wool, 10% polyamide

Weight:

400 g/m²

Abrasion Resistance:

100 000 Martindale cycles

Flammability:

EN 1021 1&2 (cigarette & match), BS 7176
low hazard, UNI 9175 , Classe 1 IM

Material:

90% Wolle, 10% Polyamid

Gewicht:

400 g/m²

Scheuerfestigkeit:

100 000 Touren Martindale

Brandschutznormen:

EN 1021 1&2 (Zigaretten & Streichholz), BS 7176
low hazard, UNI 9175 Classe 1 IM

Composition :

90% laine, 10% polyamide

Poids :

400 g/m²

Résistance à l'abrasion :

100 000 Cycles Martindales

Résistance au feu :

EN 1021 1&2 (cigarette et allumette), BS 7176
risque faible, UNI 9175 Classe 1 IM

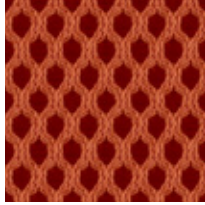
Runner* | RN

PRICE GROUP | PREISGRUPPE | GROUPE DE PRIX

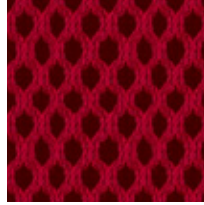
3



RN60061



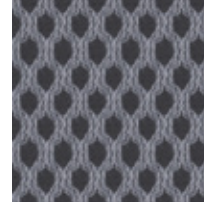
RN63034



RN64089



RN68056



RN60011



RN66064



RN60999



RN60025

* Runner - only applicable to Grammer Office brand products.
 | Runner - nur für Produkte der Marke Grammer Office erhältlich.
 | Runner - applicable uniquement sur les produits de la marque Grammer Office.

Composition:

100% polyester

Weight:318 g/m²**Abrasion Resistance:**

70 000 Martindale cycles

Flammability:EN 1021 1&2 (cigarette & match),
Calif. Bull. 117E**Material:**

100% Polyester

Gewicht:318 g/m²**Scheuerfestigkeit:**

70 000 Touren Martindale

Brandschutznormen:EN 1021 1&2 (Zigaretten & Streichholz),
Calif. Bull. 117E**Composition :**

100% polyester

Poids :318 g/m²**Résistance à l'abrasion :**

70 000 Cycles Martindales

Résistance au feu :EN 1021 1&2 (cigarette et allumette),
Calif. Bull. 117E

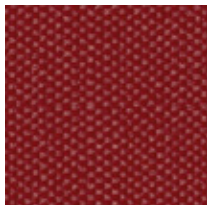
SX | Silvertex

3

PRICE GROUP | PREISGRUPPE | GROUPE DE PRIX



SX0009



SX2011



SX2016



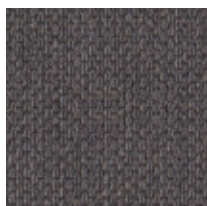
SX5008



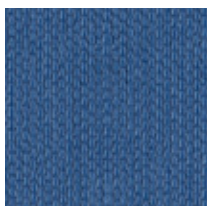
SX4002



SX4001



SX4024



SX3066

Composition: upper layer:

upper layer: 100% vinyl,
bottom layer: 100% polyester Hi-Loft

Weight:

685 g/m²

Abrasion Resistance:

300 000 Martindale cycles

Flammability:

EN 1021 1&2 (cigarette & match), DIN 4102 B2,
NF P 92-503/M2, ÖNORM B 3825 gruppe 1; ÖNORM
A 3800 Teil 1 Klasse Q1

Other:

PERMABLOK3® - superior antibacterial, antistain and antifungal protection, SILVERGUARD® - natural environmentally friendly bacteria fighting defense to inhibit odour and stain causing bacteria (silver ion technology)

Material:

Deckmaterial: 100% Vinyl, Trägergewebe: 100% Polyester Hi-Loft

Gewicht:

685 g/m²

Scheuerfestigkeit:

300 000 Touren Martindale

Brandschutznormen:

EN 1021 1&2 (Zigaretten & Streichholz), DIN 4102 B2, NF P 92-503/M2, ÖNORM B 3825 Gruppe 1; ÖNORM A 3800 Teil 1 Klasse Q1

Sonstiges:

PERMABLO K3® - antimikrobiell ausgerüstet, chemikalienbeständig und schmutzabweisend, SILVERGUARD® - verhindert dauerhaft und auf natürliche Weise die Neubildung von Mikroorganismen und die dadurch verursachte Flecken- und Geruchsbildung (Silberionen-Technologie)

Composition :

couche supérieure : 100% vinyle,
couche inférieure : 100% polyester Hi-Loft

Poids :

685 g/m²

Résistance à l'abrasion :

300 000 Cycles Martindales

Résistance au feu :

EN 1021 1&2 (cigarette et allumette), DIN 4102 B2, NF P 92-503/M2, ÖNORM B 3825 Groupe 1; ÖNORM A 3800 Teil 1 Klasse Q1

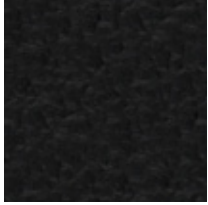
Autres :

PERMABLOK3® - traitement de protection, antibactérien, antitaches et antifongique, SILVERGUARD® - traitement antibactérien (anti odeur et antitaches), respectueux de l'environnement (à base d'ions d'argent)

Split Leather SP front* | SP

PRICE GROUP | PREISGRUPPE | GROUPE DE PRIX

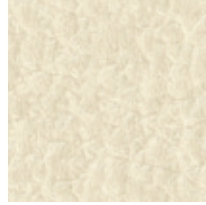
3



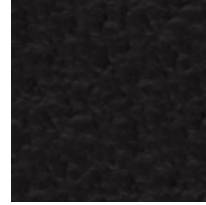
SP01



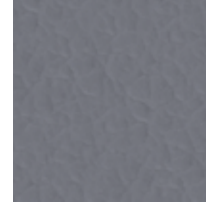
SP12



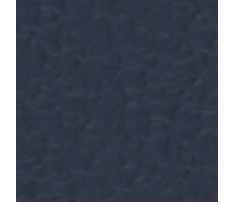
SP11



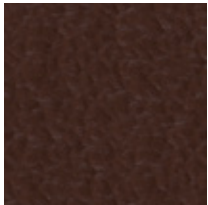
SP07



SP03



SP06



SP02

- * Split leather SP front - only applicable to Nowy Styl brand products (front of the chair in leather, back in V artificial leather).
 | Split leather SP front - nur für Produkte der Marke Nowy Styl erhältlich (Vorderseite der Stühle in leder, rückseite der Stühle in Kunstleder „V“).
 | Split leather SP front - applicable uniquement sur les produits de la marque Nowy Styl (partie avant du dossier en cuir, partie arrière en similicuir V).

Composition:
split leather (0,9 - 1,1 mm)

Material:
Spaltleder (0,9 - 1,1 mm)

Composition :
croûte de cuir (0,9 - 1,1 mm)

CUZ | Blazer

4

PRICE GROUP | PREISGRUPPE | GROUPE DE PRIX



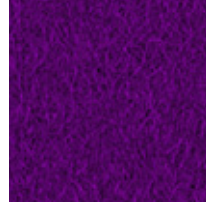
CUZ02



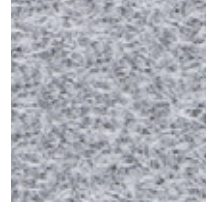
CUZ1L



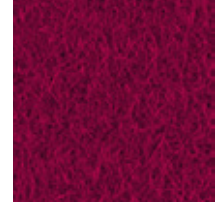
CUZ28



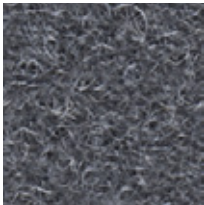
CUZ2A



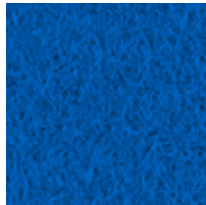
CUZ1E



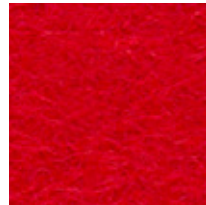
CUZ89



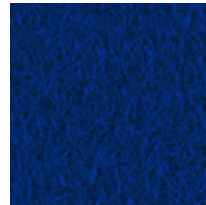
CUZ30



CUZ26



CUZ18



CUZ09

Composition:

100% wool

Weight:

460 g/m²

Abrasion Resistance:

50 000 Martindale cycles

Flammability:

EN 1021 1&2 (cigarette & match), BS 7176 low hazard, UNI 9175 Classe 1

Material:

100% Wolle

Gewicht:

460 g/m²

Scheuerfestigkeit:

50 000 Touren Martindale

Brandschutznormen:

EN 1021 1&2 (Zigaretten & Streichholz), BS 7176 low hazard, UNI 9175 Classe 1

Composition :

100% laine

Poids :

460 g/m²

Résistance à l'abrasion :

50 000 Cycles Martindales

Résistance au feu :

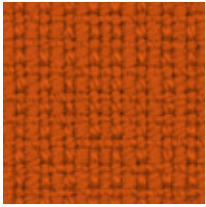
EN 1021 1&2 (cigarette et allumette), BS 7176 risque faible, UNI 9175 Classe 1

Attention! Colour patterns illustrated here may differ from the originals. Nowy Styl Group reserves the rights to change the constructional features and finishes of products. Information about finishes applicable to each product can be found in Nowy Styl Group pricelists. | Die tatsächlichen Farben können von den, im Katalog abgebildeten Farben abweichen. Weitere Informationen zu den Oberflächen /Stoffen finden Sie in den Preislisten. Nowy Styl Group behält sich das Recht vor, Designänderungen und Änderungen in den Stoffen und Oberflächen vorzunehmen. | Pour plus d'informations sur les finitions disponibles pour chaque produit, se reporter aux Tarifs Publics. Nowy Styl Group se réserve le droit de modifier les finitions de ses produits.

Fame | F

PRICE GROUP | PREISGRUPPE | GROUPE DE PRIX

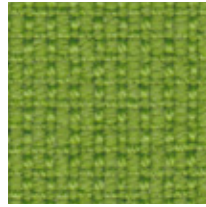
4



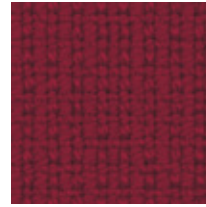
F45



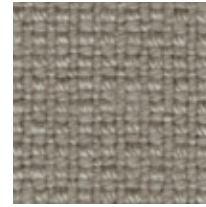
F21



F03



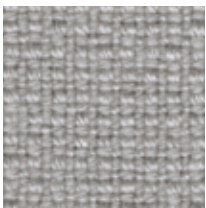
F18



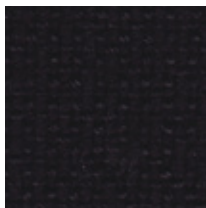
F19



F07



F04



F10

Composition:

95% wool, 5% polyamide

Weight:435 g/m²**Abrasion Resistance:**

200 000 Martindale cycles

Flammability:

BS EN 1021 1&2, BS 5852 Part 1 0,1 (cigarette & match), BS 5852 crib 5, Calif. Bull. 117E, UNI 9175 Class 2.IM, AM 18 - NF D 60-013, IMO A.652 (16), MED Certificate IMO

Other:

EU Ecolabel

Material:

95% Wolle, 5% Polyamid

Gewicht:435 g/m²**Scheuerfestigkeit:**

200 000 Touren Martindale

Brandschutznormen:

BS EN 1021 1&2, BS 5852 Part 1 0,1 (Zigaretten & Streichholz), BS 5852 crib 5, Calif. Bull. 117E, UNI 9175 Class 2.IM, AM 18 - NF D 60-013, IMO A.652 (16), MED Certificate IMO

Sonstiges:

EU Ecolabel

Composition :

95% laine, 5% polyamide

Poids :435 g/m²**Résistance à l'abrasion :**

200 000 Cycles Martindales

Résistance au feu :

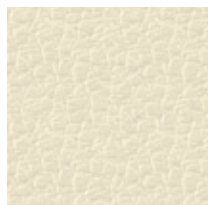
BS EN 1021 1&2, BS 5852 Part 1 0,1 (cigarette et allumette), BS 5852 crib 5, Calif. Bull. 117E, UNI 9175 Classe 2.IM, AM 18 - NF D 60-013, IMO A.652 (16), MED Certificate IMO

Autres :

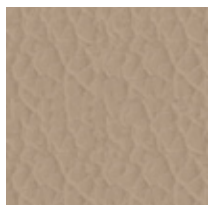
EU Ecolabel

SD | Fine Leather SD front*

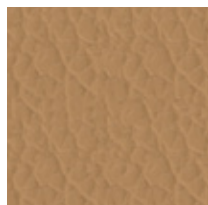
4



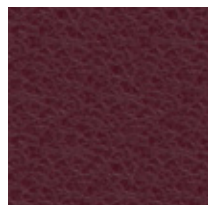
SD06



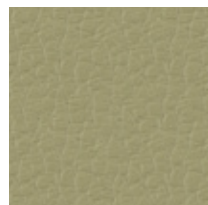
SD16



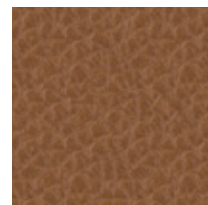
SD04



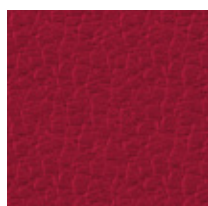
SD03



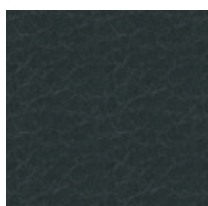
SD07



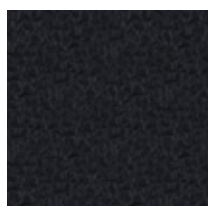
SD09



SD15



SD08



SD01

* Fine leather SD front - only applicable to Nowy Styl brand products (front of the chair in leather, back in V artificial leather).

| Fine leather SD front - nur für Produkte der Marke Nowy Styl erhältlich (Vorderseite der Stühle in leder, rückseite der Stühle in Kunstleder „V“).

| Fine leather SD front - applicable uniquement sur les produits de la marque Nowy Styl (partie avant du dossier en cuir, partie arrière en similicuir V).

Composition:

soft grain leather (0,9 - 1,1 mm), thoroughly dyed
(completely dyed)

Material:

weiches Oberleder (0,9 - 1,1 mm), durchgefärbt

Composition :

cuir pleine fleur corrigé (épaisseur 0,9 - 1,1 mm),
entièrement teinté

Fine Leather LE front* | LE

4



LE14

LE13

LE01

LE06

LE15

* Fine leather LE front - only applicable to Nowy Styl brand products (front of the chair in leather, back in V artificial leather).

| Fine leather LE front - nur für Produkte der Marke Nowy Styl erhältlich (Vorderseite der Stühle in leder, rückseite der Stühle in Kunstleder „V“).

| Fine leather LE front - applicable uniquement sur les produits de la marque Nowy Styl (partie avant du dossier en cuir, partie arrière en similicuir V).

Composition:

soft grain leather (0,9 - 1,1 mm), thoroughly dyed (completely dyed)

Material:

weiches Oberleder (0,9 - 1,1 mm), durchgefärbt

Composition :

cuir pleine fleur corrigé (épaisseur 0,9 - 1,1 mm), entièrement teinté

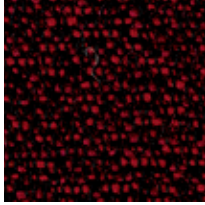
WK | 24/7*

4

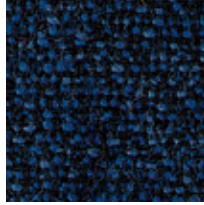
PRICE GROUP | PREISGRUPPE | GROUPE DE PRIX



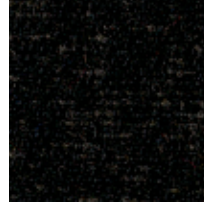
WK018



WK008



WK004



WK012



WK021

* 24/7 - only applicable to Sonata 24/7 and Oraldo 24/7.
| 24/7 - nur für Sonata 24/7 und Oraldo 24/7 erhältlich.
| 24/7 - applicable uniquement sur Sonata 24/7 et Oraldo 24/7.

Composition:

50% polyamide, 33% pure new wool, 10% visil,
7% viscose

Weight:

435 g/m²

Abrasion Resistance:

500 000 Martindale cycles

Flammability:

EN 1021 1&2 (cigarette & match), BS 7176 low hazard, BS 7176 medium hazard, BS 5852 Section 4 crib 5, UNI 9175 Classe 1 IM

Material:

50% Polyamid, 33% reine Schurwolle, 10% Visil,
7% Viskose

Gewicht:

435 g/m²

Scheuerfestigkeit:

500 000 Touren Martindale

Brandschutznormen:

EN 1021 1&2 (Zigaretten & Streichholz), BS 7176 low hazard, BS 7176 medium hazard, BS 5852 Section 4 crib 5, UNI 9175 Classe 1 IM

Composition :

50% polyamide, 33% laine, 10% visil, 7% viscose

Poids :

435 g/m²

Résistance à l'abrasion :

500 000 Cycles Martindales

Résistance au feu :

EN 1021 1&2 (cigarette et allumette), BS 7176 risque faible, BS 7176 risque moyen, BS 5852 Section 4 crib 5, UNI 9175 Classe 1 IM

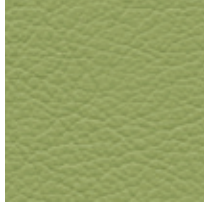
Fine Leather LE | LE

PRICE GROUP | PREISGRUPPE | GROUPE DE PRIX

5



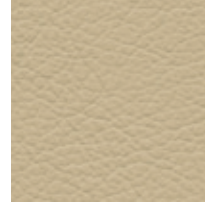
LE14



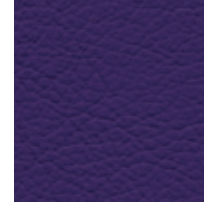
LE13



LE01



LE06



LE15

Composition:

soft grain leather (0,9 - 1,1 mm), thoroughly dyed
(completely dyed)

Material:

weiches Oberleder (0,9 - 1,1 mm), durchgefärbt

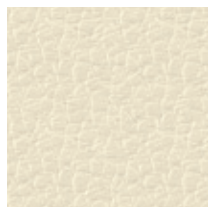
Composition :

cuir pleine fleur corrigé (épaisseur 0,9 - 1,1 mm),
entièrement teinté

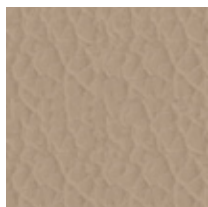
SD | Fine Leather SD

5

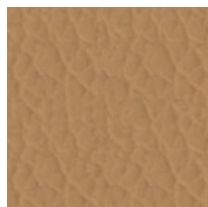
PRICE GROUP | PREISGRUPPE | GROUPE DE PRIX



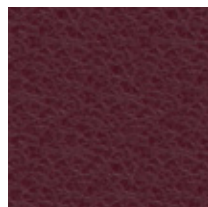
SD06



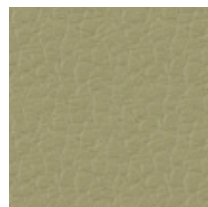
SD16



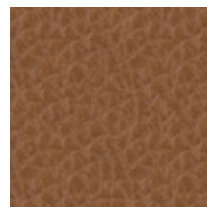
SD04



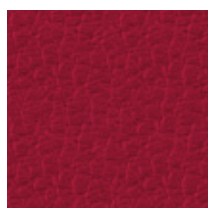
SD03



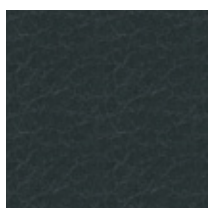
SD07



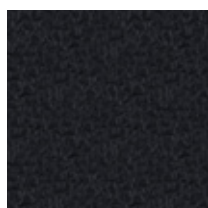
SD09



SD15



SD08



SD01

Composition:

soft grain leather (0,9 - 1,1 mm), thoroughly dyed
(completely dyed)

Material:

weiches Oberleder (0,9 - 1,1 mm), durchgefärbt

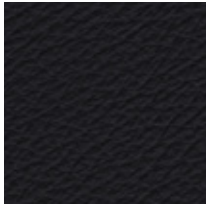
Composition :

cuir pleine fleur corrigé (épaisseur 0,9 - 1,1 mm),
entièrement teinté

Fine Leather Q | Q

PRICE GROUP | PREISGRUPPE | GROUPE DE PRIX

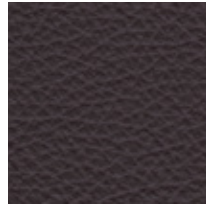
5



Q1



Q7



Q9



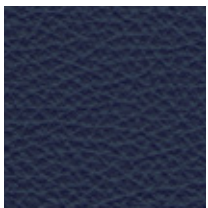
Q2



Q12



Q10



Q14

Composition:

soft grain leather (1,3 - 1,5 mm), thoroughly dyed
(completely dyed)

Material:

weiches Oberleder (1,3 - 1,5 mm), durchgefärbt

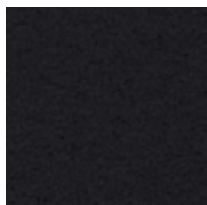
Composition :

cuir pleine fleur corrigé (épaisseur 1,3 - 1,5 mm),
entièrement teinté

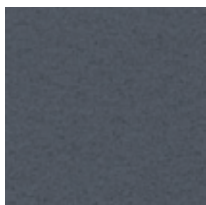
Alcantara*

6

PRICE GROUP | PREISGRUPPE | GROUPE DE PRIX



9901



6404



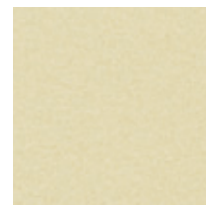
1100



7941



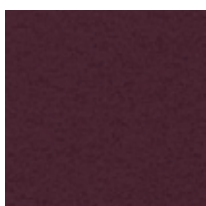
3096



1150



3322



6833

* Alcantara - only applicable to BN Office Solution brand soft-seating products.
| Alcantara - nur für soft-seating Produkte der Marke BN Office Solution erhältlich.
| Alcantara - applicable uniquement sur les produits soft-seating de la marque BN Office Solution.

Composition:

upper layer: 68% polyester , 32% polyurethane, bottom layer: 65% polyester , 35% cotton

Weight:

340 g/m²

Abrasion Resistance:

150 000 Martindale cycles

Material:

Deckmaterial: 68% Polyester , 32% Polyurethan, Trägergewebe: 65% Polyester , 35% Baumwolle

Gewicht:

340 g/m²

Scheuerfestigkeit:

150 000 Touren Martindale

Composition :

couche supérieure : 68% polyester , 32% polyuréthane, couche inférieure : 65% polyester , 35% coton

Poids :

340 g/m²

Résistance à l'abrasion :

150 000 Cycles Martindales

Attention! Colour patterns illustrated here may differ from the originals. Nowy Styl Group reserves the rights to change the constructional features and finishes of products. Information about finishes applicable to each product can be found in Nowy Styl Group pricelists. | Die tatsächlichen Farben können von den, im Katalog abgebildeten Farben abweichen. Weitere Informationen zu den Oberflächen /Stoffen finden Sie in den Preislisten. Nowy Styl Group behält sich das Recht vor, Designänderungen und Änderungen in den Stoffen und Oberflächen vorzunehmen. | Pour plus d'informations sur les finitions disponibles pour chaque produit, se reporter aux Tarifs Publics. Nowy Styl Group se réserve le droit de modifier les finitions de ses produits.

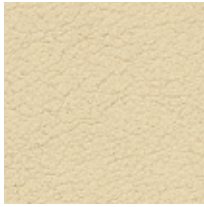
Fine Leather Designo*

PRICE GROUP | PREISGRUPPE | GROUPE DE PRIX

6



05599



05522



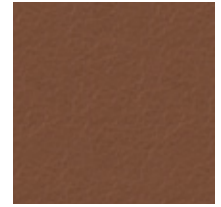
55130



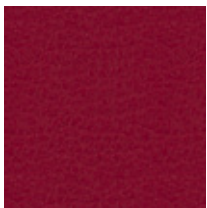
55115



05500



05503



05106

* Fine Leather Designo - only applicable to Grammer Office brand products.
 | Fine Leather Designo - nur für Produkte der Marke Grammer Office erhältlich.
 | Fine Leather Designo - applicable uniquement sur les produits de la marque Grammer Office.

Composition:

high quality leather (0,9 - 1,3 mm), naturally grained,
without artificial embossing

Flammability:

ÖNORM B3800, BS 5852 crib 5, EN 1021-1, EN
1021-2

Material:

Qualitativ hochwertiges Leder (0,9 - 1,3 mm),
naturnarbig, ohne künstliche Prägung

Brandschutznormen:

ÖNORM B3800, BS 5852 crib 5, EN1021-1, EN
1021-2

Composition :

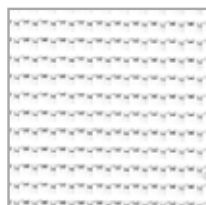
cuir naturel de haute qualité (0,9 - 1,3 mm),
naturellement grainé, non rectifié

Résistance au feu :

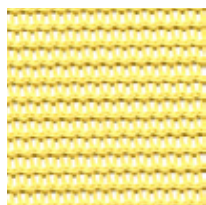
ÖNORM B3800, BS 5852 crib 5, EN 1021-1,
EN1021-2

OP | Mesh

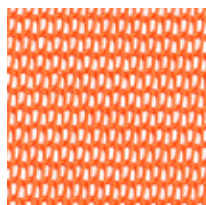
For | Für | Pour **Intrata, Officer Net**



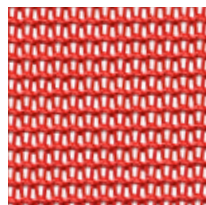
OP20



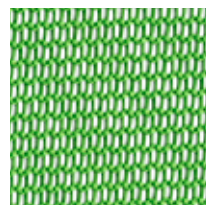
OP22



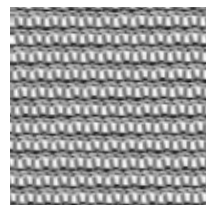
OP23



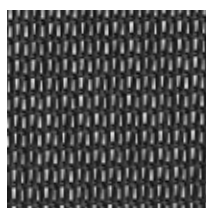
OP21



OP26



OP25



OP24N

Mesh

For | Für | Pour **Sail**



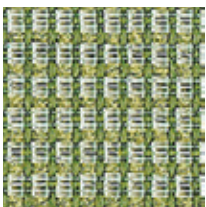
01



02

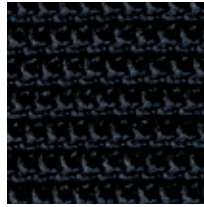


04

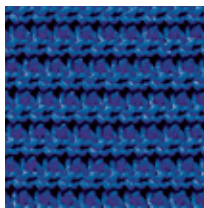


06

For | Für | Pour **GLOBEline**



01



04

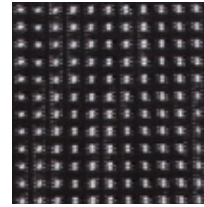


09

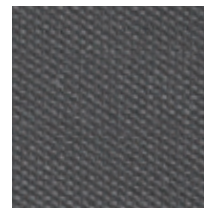


13

For | Für | Pour



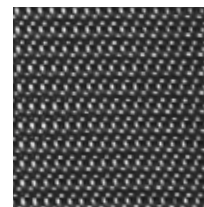
@-motion



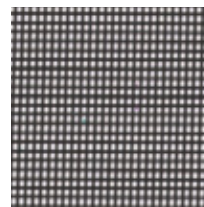
Extra



Mojito



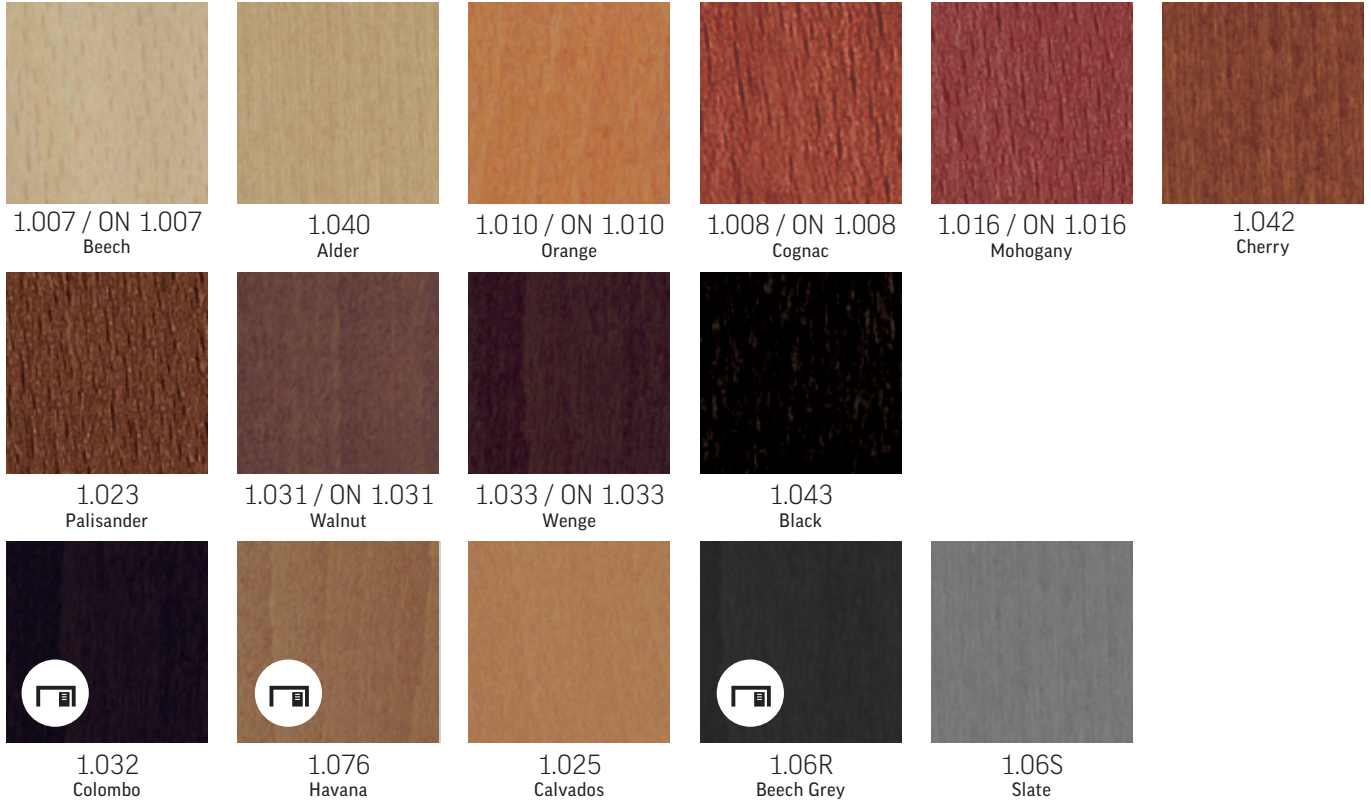
Neo-Lux



Z-body

Wood & Plywood | Beiztöne Schichtholz

| Hêtre & Multiplis



"ON" symbols refer to veneered table tops.

| Oberflächen für Stühle und Holzelemente in Stühlen.

Die mit "ON" gekennzeichneten Oberflächen beziehen sich auf Tischplatten.

| Les symboles « ON » se réfèrent aux coloris des plateaux en placage bois.



Veneer furniture colour matching
wood/plywood furniture colour:

CB Veneer = 1.032 (Colombo)
LV Veneer = 1.076 (Havana)
BG Veneer = 1.06R (Beech Grey)



Die abgebildeten Beiztöne sind identisch mit folgenden
Furnieroberflächen für Möbel:

CB Furnier = 1.032 (Colombo)
LV Furnier = 1.076 (Havana)
BG Furnier = 1.06R (Beech Grey)

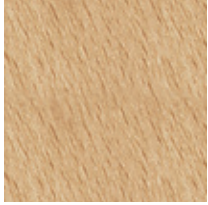


Couleurs de meubles en placage bois assorties aux
couleurs de meubles en hêtre/multiplis:

CB Placage bois = 1.032 (Colombo)
LV Placage bois = 1.076 (Havana)
BG Placage bois = 1.06R (Beech Grey)

Beech wood | Buchenschichtholz | Hêtre massif

For wooden chairs only | Nur für komplette Holzstühle | Pour chaises en bois uniquement



1.127
Beech



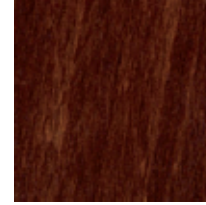
4.037
Amber Cherry



4.047
Classic Cherry



4.041
Antique Cherry



4.038
Walnut



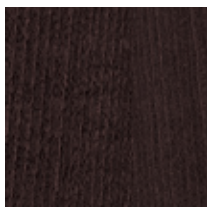
1.126
Classic Wenge

Veneered plywood +4 | Furnier +4 | Multiplis vernis +4

For furniture only | Nur für Möbel | Pour meubles uniquement



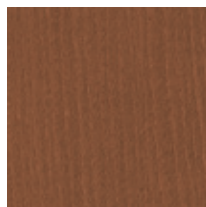
LN
Beech Nature



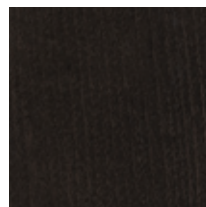
CB
Beech Colombo



LK
Classic Cherry



LV
Beech Havana



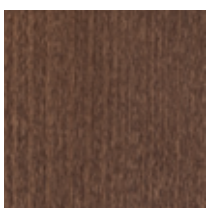
BG
Beech Grey



AE
Maple



LH
Beech Honey



BN
Beech Brown

Closed pore veneers +4. | Geschlossenes Echtholz furnier +4. | Placage bois pores fermés +4.

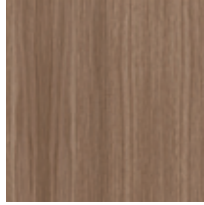
Veneered plywood +5 | Furnier +5 | Multiplis vernis +5



OA
American Nut



BC
Bamboo



DN
Nature Oak

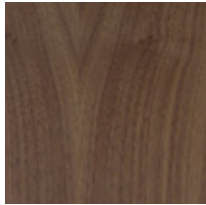
Open pore veneers +5. | Offenporiges Echtholz furnier +5. | placage bois pores ouverts +5.

Veneered plywood | Furnier | Multiplis vernis

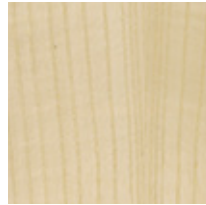
For | Für | Pour **Axo, Conversa, Espacio**



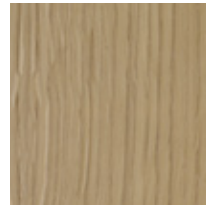
2.Z07
Zebrano



2.N07
Eco Nut



2.J07
Ash

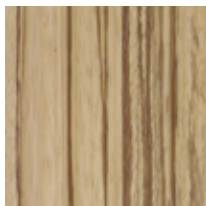


2.Z07
Oak

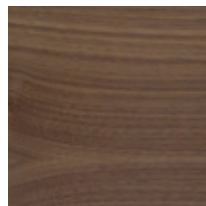
For | Für | Pour **Madras**



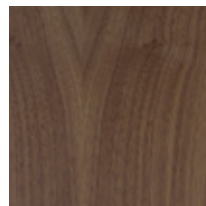
2.Z07
Horizontal Zebrano



2.Z07
Vertical Zebrano



2.N07
Horizontal Eco Nut



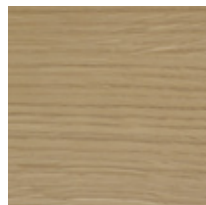
2.N07
Vertical Eco Nut



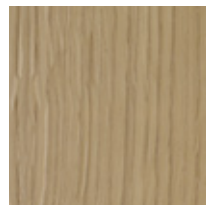
2.J07
Horizontal Ash



2.J07
Vertical Ash

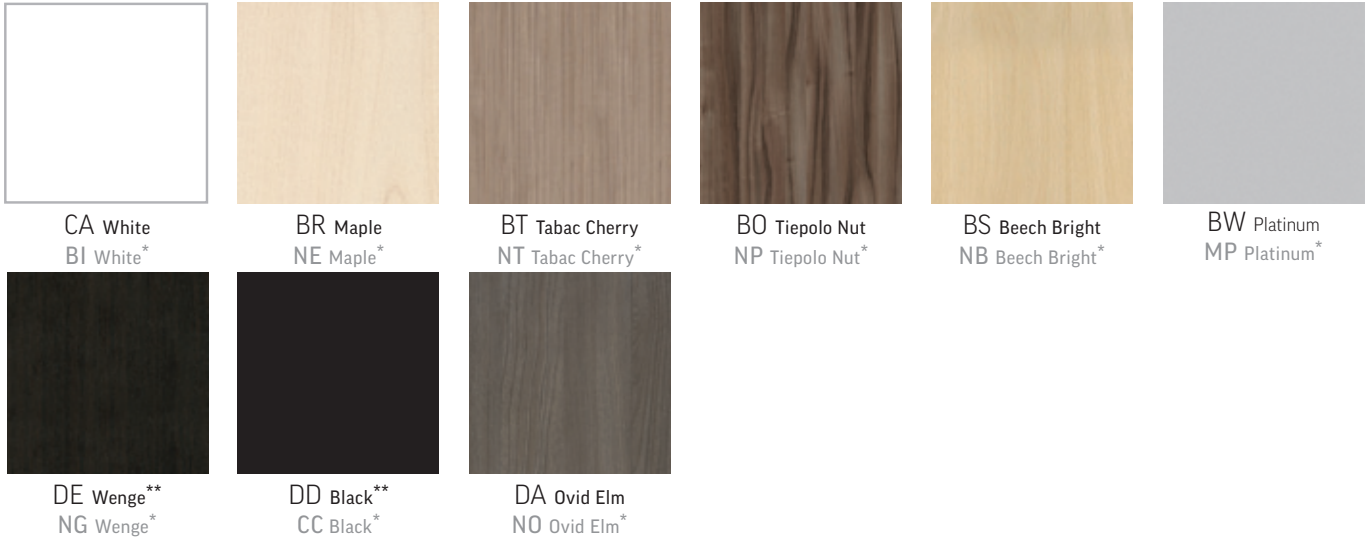


2.D07
Horizontal Oak



2.D07
Vertical Oak

Laminated table tops | Tischplatte Laminat | Plateaux en stratifié



* Melamine colours matching all above laminate colours.

** Not available for CX 3200

* Die abgebildeten Laminatoberflächen sind identisch mit diesen Melaminoberflächen.

** Nicht verfügbar für CX 3200

* Couleurs de mélaminé correspondant à toutes les couleurs de stratifié.

** Non disponible pour le CX 3200

Laminates | Laminatoberflächen | Stratifiés

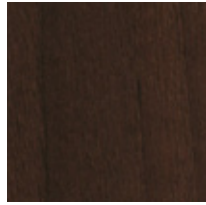
For chairs only | Nur für Stühle | Pour chaises uniquement



H1733
Mainau Birch



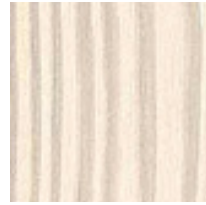
H3389
Natural Light Oak



H3704
Tobacco Aida Walnut



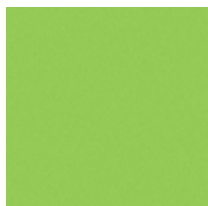
NG9763
Wenge



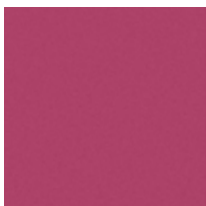
H1474
White Avola



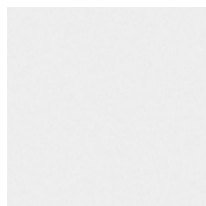
H3005
Grey Beige Zebrano



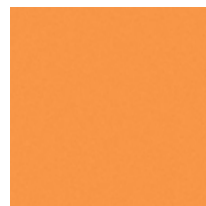
U630
Lime Green



U337
Fuchsia



W1000
Premium White



U303
Orange



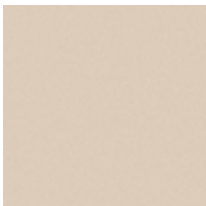
U963
Dark Grey



U330
Aubergine



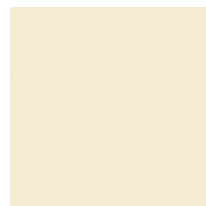
U129
Sun Yellow



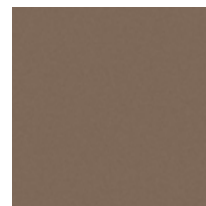
U156
Sand Beige



U514
Baltic Blue



U108
Vanilla



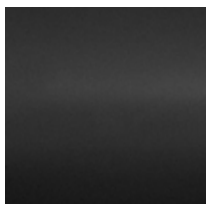
U795
Brown Grey



U321
China Red

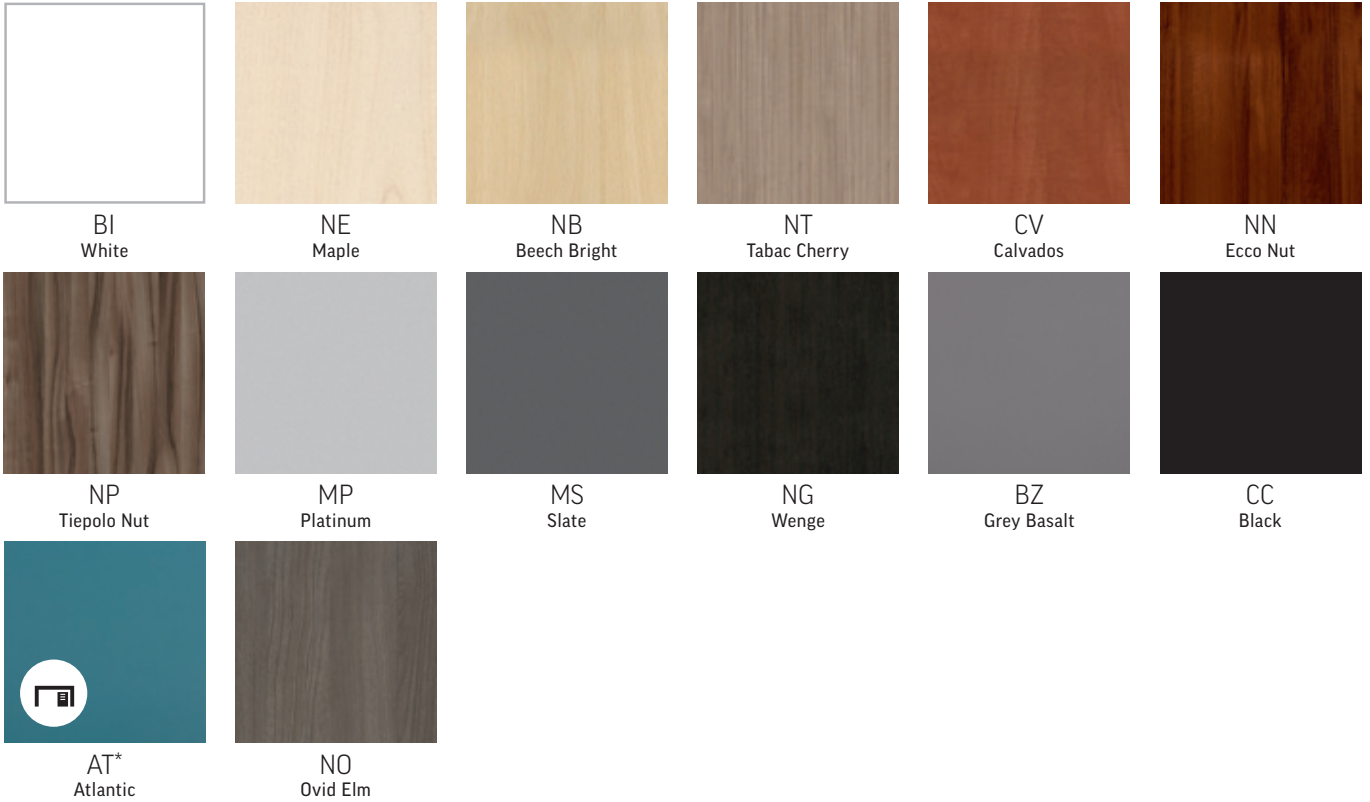


U773
Dusk Grey



U999
Black

Melamine | Melamina | Melamin



* For furniture only | Nur für Möbel | Pour meubles uniquement

To order melamine tops, melamine colour code should be preceded by "MA-" symbol, example: "MA-BI".

| Bei Bestellung der Ausführung Melamin sollte der Farbcode nach dem Kürzel „MA“ wie folgt angegeben werden: „MA-BI“.

| Pour commander un plateau en mélaminé, composer la référence en ajoutant le « MA- » au symbole du coloris, par exemple « MA-BI ».

Melamine Top 36 | Melamin Top 36 | Mélamine Top 36



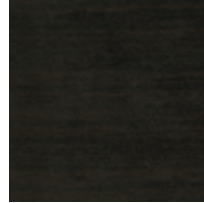
MA-BI
White



MA-NE
Maple



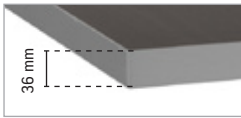
MA-NT
Tabac Cherry



MA-NG
Wenge



MA-CC
Black



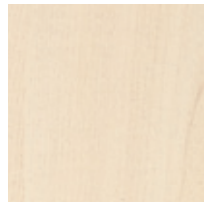
Aluminum edge
Umlaufende Aluminiumkante
Bord en aluminium

Table top thickness 36 mm.
Stärke der Tischplatte 36 mm.
Épaisseur du plateau 36 mm.

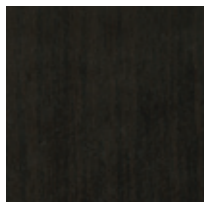
Melamine Top 50 | Melamin Top 50 | Mélamine Top 50



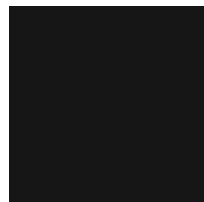
MA-BI
White



MA-NE
Maple



MA-NG
Wenge

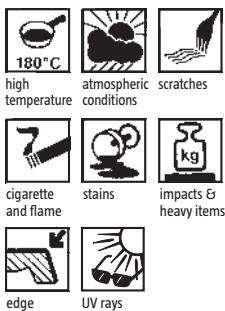
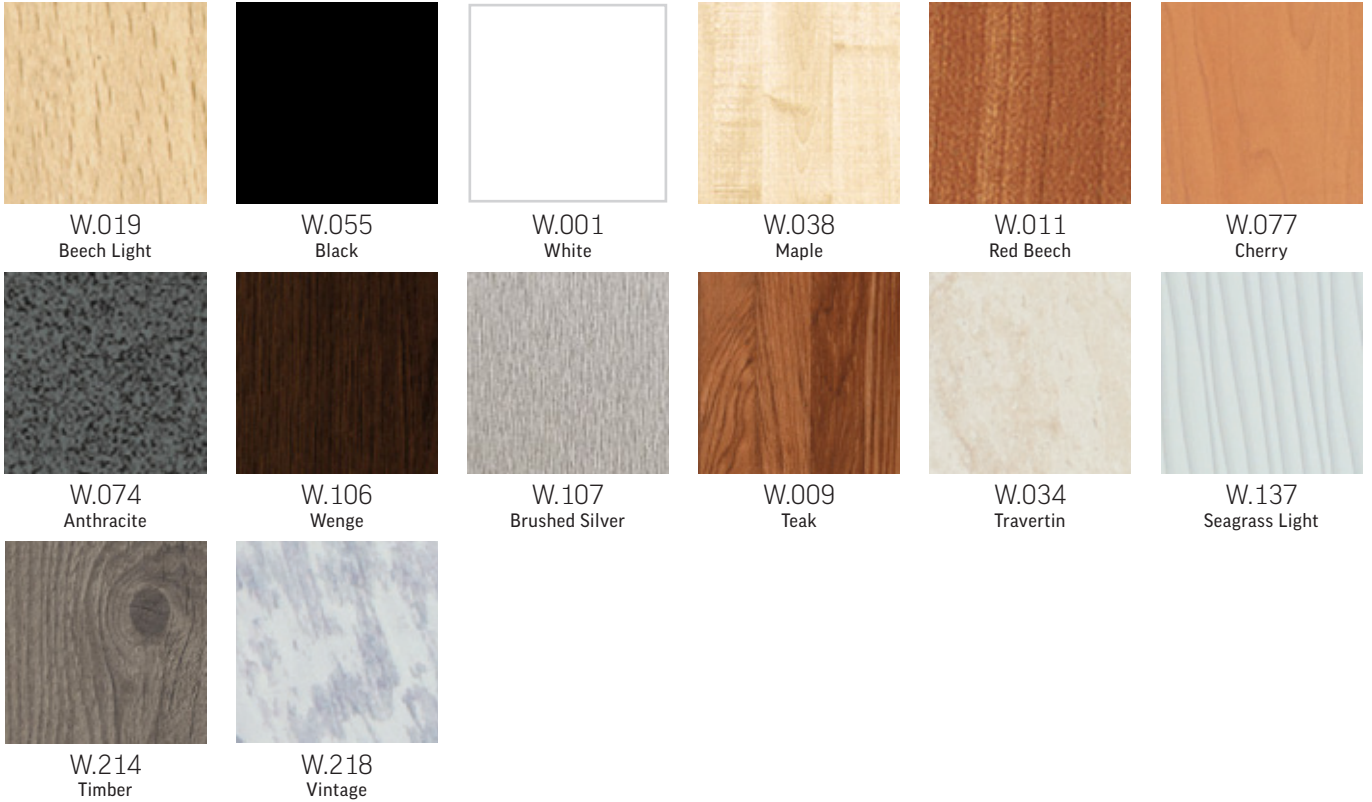


MA-CC
Black



Table top thickness 50 mm.
Stärke der Tischplatte 50 mm.
Épaisseur du plateau 50 mm.

Topalit table top | Tischplatte Topalit | Plateaux en topalit

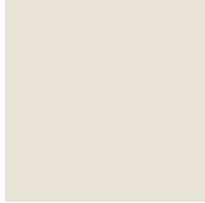


Plastic | Kunststoff | Synthétique

For | Für | Pour **Fano, Karai**



Matt White



Matt Ecru



Matt Lime Green



Matt Orange



Matt Red



Matt Purple

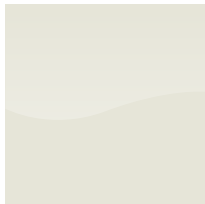


Matt Anthracite

For | Für | Pour **Fondo PP**



Gloss White



Gloss Ecru



Gloss Lime Green



Gloss Orange



Gloss Red

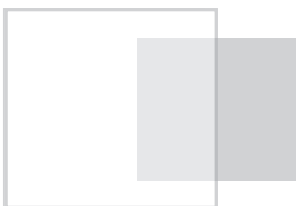


Gloss Purple



Gloss Anthracite

For | Für | Pour **Fondo PC**



Transparent



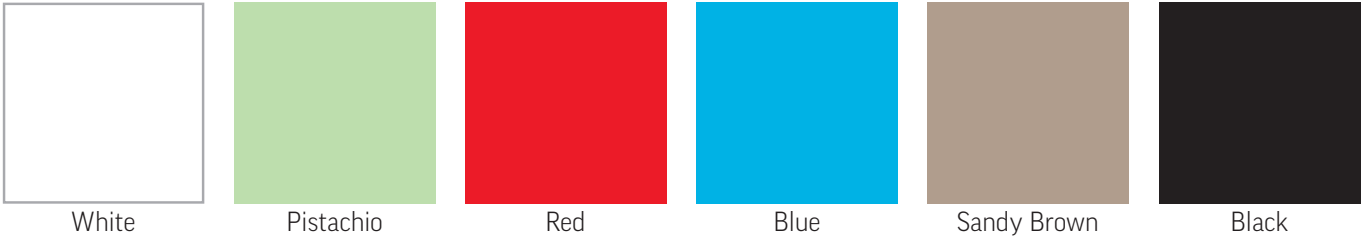
Transparent-Orange



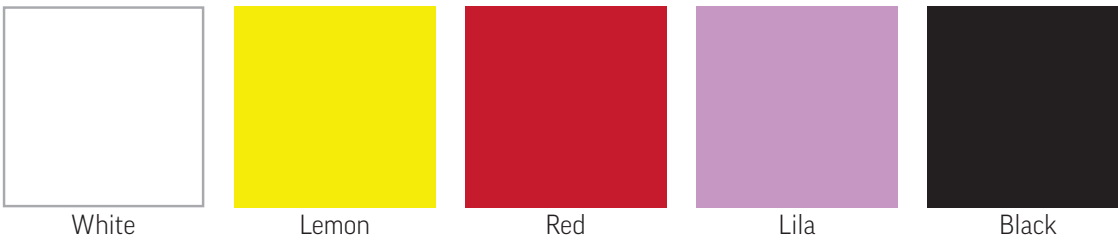
Transparent-Red

Plastic | Kunststoff | Synthétique

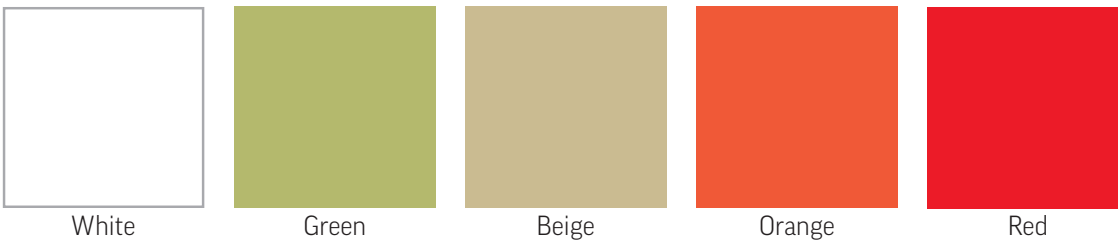
For | Für | Pour **El Sol**



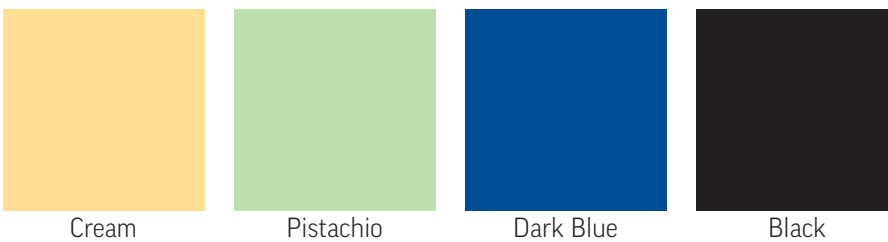
For | Für | Pour **Lula**



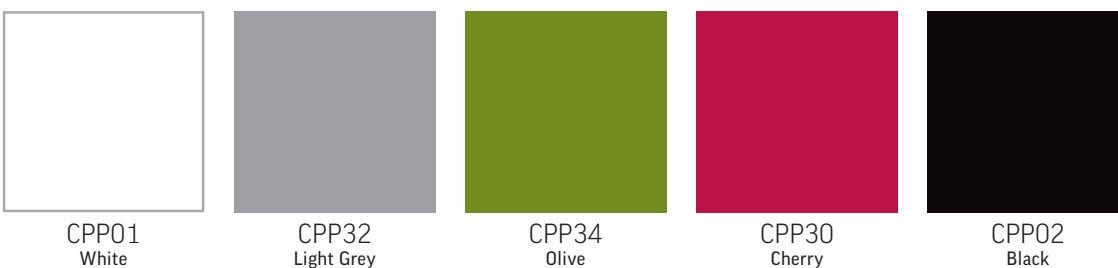
For | Für | Pour **Soleil**



For | Für | Pour **Fiuggi**



For | Für | Pour **Calado**



Plastic | Kunststoff | Synthétique

For | Für | Pour **Passu**



KS13
White



KS14
Orange



KS11
Green



KS04
Blue

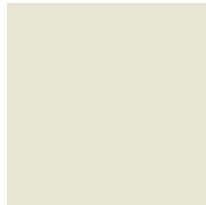


KS01
Black

For | Für | Pour **Amigo, Beta, Cortessa, Cortina, Iso, Polyfold**



K-01



K-53



K-36



K-35



K-33



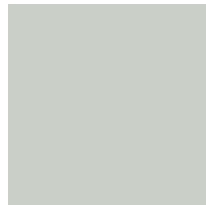
K-30



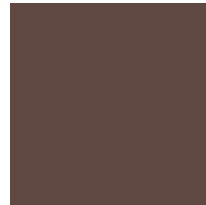
K-59



K-31



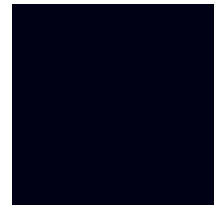
K-32



K-51



K-05



K-02

For | Für | Pour **Jimmy**



K-01



K-33



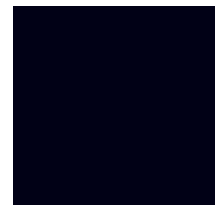
K-30



K-31



K-05



K-02

For | Für | Pour **Polyfold Plus**

K-30



K-31



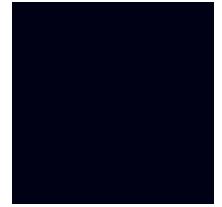
K-51



K-59



K-05



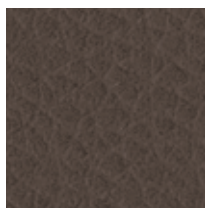
K-02



TK-30



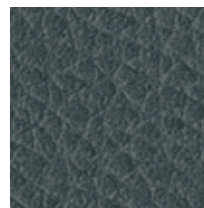
TK-31



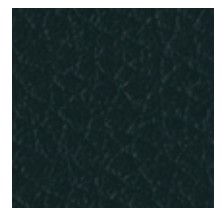
TK-51



TK-59



TK-05



TK-02

Metal | Metall | Métal



Glass | Glas | Verre



